



Government of India  
Ministry of Earth Sciences  
India Meteorological Department



Press Release

Date: 28<sup>th</sup> June 2026

Time of Issue: 1400 hours IST

**Subject: (i) Heavy to Very heavy rainfall (7-20cm) is likely over northeast India and Sub-Himalayan West Bengal & Sikkim during next 5 days with isolated extremely heavy rainfall over Sub-Himalayan West Bengal & Sikkim during 28<sup>th</sup> to 29<sup>th</sup> June and over Assam & Meghalaya on 28<sup>th</sup> June, 2026.**

**(ii) Heat wave to severe heat wave conditions likely over Uttar Pradesh & neighbourhood during next 2 days.**

**Advance of Southwest Monsoon 2026 (Annexure I):**

- ❖ The **Northern Limit of Monsoon** continues to pass through 20°N/60°E, 20°N/65°E, 20°N/70°E, Surat, Indore, Mandla, Daltonganj, Motihari and 28.3°N/83°E as on 28<sup>th</sup> June.
- ❖ **Conditions are favourable** for further advance of southwest monsoon into some more parts of North Arabian Sea, Gujarat, Madhya Pradesh, remaining parts of Chhattisgarh, Jharkhand & Bihar, some parts of Uttar Pradesh & Uttarakhand during next 2-3 days and over some more parts of Madhya Pradesh, Uttar Pradesh, Uttarakhand, some parts of Himachal Pradesh, Jammu & Kashmir, Ladakh and southeast Rajasthan during subsequent 2-3 days.

**Realised weather during past 24 hours ending at 0830 hours IST of today, the 28<sup>th</sup> June, 2026:**

- ❖ **Exceptionally heavy rainfall has been recorded at isolated places over Meghalaya (39 cm).**
- ❖ **Extremely heavy rainfall ( $\geq 21$  cm)** has been recorded at isolated places over Sub-Himalayan West Bengal.
- ❖ **Very Heavy rainfall (12-20 cm)** has been recorded at isolated places over West Madhya Pradesh and Arunachal Pradesh.
- ❖ **Heavy rainfall (7-11 cm)** has been recorded at isolated places over East Madhya Pradesh, East Rajasthan, East Uttar Pradesh, Odisha, Goa, Vidarbha, Chhattisgarh, Mizoram, Kerala and Tamil Nadu.
- ❖ **Thunderstorm accompanied with Squally/Gusty winds with speed reaching 61-80 kmph** has been recorded at isolated places over Gangetic West Bengal, West Madhya Pradesh **with speed reaching 40-60 kmph** at isolated places over East Madhya Pradesh, Uttarakhand, East Uttar Pradesh, Bihar, Jharkhand, Punjab, West Uttar Pradesh, Madhya Maharashtra, Saurashtra and Assam.
- ❖ **Heat wave to severe heat wave conditions** prevailed in some parts of East Uttar Pradesh and in isolated pockets of West Uttar Pradesh.

**Temperature Conditions during past 24 hours till 0830 hours IST of today:**

- ❖ **Day/Maximum Temperatures (as on 27-06-2026):** Yesterday, Day/Maximum temperatures were in the range of 40-43°C over many places over East Uttar Pradesh; few places over West Uttar Pradesh, at isolated places over West Madhya Pradesh, Bihar, Haryana and West Rajasthan, Jharkhand and below 40°C over rest parts of the country. The highest maximum temperature of **43.8°C** was reported at **Phalodi (Rajasthan)**.
- ❖ **Day/Maximum Temperature Departures (as on 27-06-2026):** were **markedly above normal (> 5.1°C)** at many places over West Uttar Pradesh; at few places over East Uttar Pradesh and Chhattisgarh; at isolated places over Assam & Meghalaya, Gangetic West Bengal, Odisha, Himachal Pradesh, East Madhya Pradesh and Madhya Maharashtra. **appreciably above normal (3.1°C to 5.0°C)** at many places over Bihar, Uttarakhand, Haryana-Chandigarh-Delhi, Punjab and Gujarat Region; at few places over Sub Himalayan West Bengal & Sikkim, West Rajasthan and South Interior Karnataka; at isolated places over Tripura, Jharkhand, West Madhya Pradesh, Saurashtra & Kutch, North Interior Karnataka and Kerala & Mahe. **above normal (1.6°C to 3.0°C)** at many places over Konkan & Goa and Coastal Karnataka; at most places over East Rajasthan; at few places over Rayalaseema and Lakshadweep; at isolated places over Coastal Andhra Pradesh & Yanam and **near normal / below normal** over rest parts of the country.
- ❖ **Night Temperatures/Minimum temperatures (as on 28-06-2026):** **appreciably above normal (3.1°C to 5.0°C)** over Punjab, Uttar Pradesh, Odisha; **above normal (1.6°C to 3.0°C)** over Jammu-Kashmir, Himachal Pradesh, Uttarakhand, Haryana Chandigarh & Delhi, West Rajasthan, Gujarat State, East Madhya Pradesh, Bihar, Gangetic West Bengal, Assam, Madhya Maharashtra, Coastal Andhra Pradesh & Yanam, Telangana, Tamil Nadu, Puducherry & Karaikal and **near normal/below normal** over rest parts of the country.

### Weather Systems, Forecast and Warnings (Annexure II & III):

- ❖ The **seasonal trough** runs from Punjab to Bihar.
- ❖ A **Western Disturbance** as a trough in middle tropospheric level runs roughly along Long 77°E to the north of Lat 25°N.
- ❖ A **trough** runs from northeast Madhya Pradesh to Telangana in lower tropospheric level.
- ❖ An **upper air cyclonic circulation** lies over Madhya Pradesh and neighbourhood in lower & middle tropospheric levels.
- ❖ An **upper air cyclonic circulation** lies over Eastcentral Arabian sea off Maharashtra coast in middle & upper tropospheric levels.
- ❖ An **upper air cyclonic circulation** lies over north Telangana & neighbourhood in middle & upper tropospheric levels
- ❖ A **trough** runs from northern parts of Coastal Andhra Pradesh to Madhya Maharashtra in middle tropospheric level.
- ❖ A **trough** runs from North Interior Karnataka to Comorin area in lower tropospheric level.
- ❖ A **fresh Western Disturbance** is likely to affect Northwest India from 02<sup>nd</sup> July, 2026.

### Under the influence of above systems, the following weather is likely:

#### Northwest India:

- ❖ **Isolated to Scattered** rainfall likely over Jammu-Kashmir-Ladakh-Gilgit-Baltistan-Muzaffarabad during 28th-29th June; Himachal Pradesh during 28th June-1st July; Uttarakhand on 28th June.
- ❖ **Isolated to Scattered** rainfall likely over Haryana Chandigarh & Delhi and Punjab during 28th-29th June and during 1st-2nd July; West Uttar Pradesh during 28th June-1st July and during 3rd-4th July; East Uttar Pradesh during 28th-30th June and on 4th July; East Rajasthan and West Rajasthan during 28th June-4th July.
- ❖ **Fairly Widespread to Widespread** rainfall likely over Jammu-Kashmir-Ladakh-Gilgit-Baltistan-Muzaffarabad during 30th June-4th July; Himachal Pradesh during 2nd-4th July; Uttarakhand during 29th June-4th July.
- ❖ **Fairly Widespread to Widespread** rainfall likely over Haryana Chandigarh & Delhi and Punjab during 3rd-4th July; West Uttar Pradesh on 2nd July; East Uttar Pradesh during 1st-3rd July.
- ❖ **Isolated thunderstorm, lightning & gusty winds (speed reaching 40-50 kmph gusting to 60 kmph)** likely over Jammu-Kashmir-Ladakh-Gilgit-Baltistan-Muzaffarabad during 28th June-4th July, **with gusty winds (speed reaching 30-40 kmph gusting to 50 kmph)** likely over Himachal Pradesh during 30th June-4th July; Uttarakhand during 28th June-1st July.
- ❖ **Isolated thunderstorm, lightning & gusty winds (speed reaching 40-50 kmph gusting to 60 kmph)** likely over Punjab on 28th June and during 1st-4th July; Haryana Chandigarh & Delhi and West Rajasthan during 1st-4th July; West Uttar Pradesh on 28th June and during 30th June-4th July; East Rajasthan and East Uttar Pradesh during 28th June-4th July, **with gusty winds (speed reaching 30-40 kmph gusting to 50 kmph)** likely over West Rajasthan during 28th-30th June.
- ❖ **Isolated thunderstorm & lightning** likely over Himachal Pradesh during 28th-29th June; Uttarakhand during 2nd-3rd July.
- ❖ **Isolated heavy rainfall** likely over Jammu-Kashmir-Ladakh-Gilgit-Baltistan-Muzaffarabad and Punjab, Haryana Chandigarh during 2nd-3rd July; Himachal Pradesh during 1st-4th July; Uttarakhand during 30th June-4th July; East Uttar Pradesh during 30th June-1st July; East Rajasthan during 2nd-4th July.
- ❖ **Isolated Hailstorm** activity likely over Jammu-Kashmir-Ladakh-Gilgit-Baltistan-Muzaffarabad on 30th June.

#### Central India:

- ❖ **Isolated to Scattered** rainfall likely over East Madhya Pradesh and West Madhya Pradesh during 28th-30th June.
- ❖ **Fairly Widespread to Widespread** rainfall likely over East Madhya Pradesh and West Madhya Pradesh during 1st-4th July; Chhattisgarh and Vidarbha during 28th June-4th July.
- ❖ **Isolated thunderstorm, lightning & gusty winds (speed reaching 40-50 kmph gusting to 60 kmph)** likely over East Madhya Pradesh, Vidarbha and West Madhya Pradesh during 28th June-2nd July.
- ❖ **Isolated thunderstorm & lightning** likely over Chhattisgarh during 28th June-2nd July.
- ❖ **Isolated heavy rainfall** likely over West Madhya Pradesh during 28th June-1st July and on 4th July; East Madhya Pradesh during 28th-30th June and on 4th July; Vidarbha during 28th June-2nd July; Chhattisgarh during 28th June-4th July with isolated **very heavy rainfall** also likely over West Madhya Pradesh during 2nd-3rd July; East Madhya Pradesh during 1st-3rd July; Vidarbha during 3rd-4th July.
- ❖ **Moderate to intense lightning activity likely during next 2-3 days.**

#### East India:

- ❖ **Fairly Widespread to Widespread** rainfall likely over Andaman & Nicobar Islands, Jharkhand and Sub-Himalayan West Bengal & Sikkim during 28th June-4th July; Gangetic West Bengal during 30th June-4th July; Bihar during 29th June-1st July; Odisha during 29th June-4th July.
- ❖ **Isolated to Scattered** rainfall likely over Gangetic West Bengal during 28th-29th June; Bihar on 28th June and during 2nd-4th July; Odisha on 28th June.
- ❖ **Isolated thunderstorm, lightning & gusty winds (speed reaching 40-50 kmph gusting to 60 kmph)** likely over Andaman & Nicobar Islands, Gangetic West Bengal, Jharkhand and Odisha during 28th June-4th July; Bihar during 28th-

- 30th June and during 3rd-4th July, **with gusty winds (speed reaching 30-40 kmph gusting to 50 kmph)** likely over Sub-Himalayan West Bengal & Sikkim during 28th June-2nd July; Bihar during 1st-2nd July.
- ❖ Isolated **heavy rainfall** likely over Andaman & Nicobar Islands on 28th June; Sub-Himalayan West Bengal & Sikkim during 28th-29th June and on 1st July; Gangetic West Bengal on 1st July and during 3rd-4th July; Jharkhand during 30th June-1st July; Bihar during 28th-29th June and on 2nd July; Odisha during 28th-29th June and during 2nd-4th July with isolated **very heavy rainfall** also likely over Sub-Himalayan West Bengal & Sikkim on 30th June; Bihar and Odisha during 30th June-1st July.
  - ❖ **Heavy to very heavy rainfall at many places with extremely heavy rainfall likely at isolated places over Sub-Himalayan West Bengal & Sikkim on 28<sup>th</sup> & 29<sup>th</sup> June.**
  - ❖ **Moderate to intense lightning activity likely during next 2-3 days.**

#### Northeast India:

- ❖ **Fairly Widespread to Widespread** rainfall likely over Arunachal Pradesh during 28th June-2nd July; Assam & Meghalaya and Nagaland, Manipur, Mizoram & Tripura during 28th June-4th July.
- ❖ **Isolated to Scattered** rainfall likely over Arunachal Pradesh during 3rd-4th July.
- ❖ Isolated **thunderstorm & lightning** likely over Arunachal Pradesh and Nagaland, Manipur, Mizoram & Tripura during 28th June-1st July; Assam & Meghalaya during 28th June-2nd July.
- ❖ Isolated **heavy rainfall** likely over Arunachal Pradesh on 28th June and during 30th June-2nd July; Assam & Meghalaya on 28th June and during 1st-3rd July; Nagaland, Manipur, Mizoram & Tripura during 28th June-1st July with isolated **very heavy rainfall** also likely over Arunachal Pradesh on 29th June; Assam & Meghalaya during 29th-30th June.
- ❖ **Heavy to very heavy rainfall at many places with extremely heavy rainfall likely at isolated places over Arunachal Pradesh and Assam & Meghalaya on 28<sup>th</sup> June.**

#### West India:

- ❖ **Fairly Widespread to Widespread** rainfall likely over Konkan & Goa during 28th June-4th July; Madhya Maharashtra on 28th June and during 3rd-4th July; Marathwada on 28th June; Gujarat Region on 4th July.
- ❖ **Isolated to Scattered** rainfall likely over Madhya Maharashtra during 29th June-2nd July; Marathwada during 29th June-4th July; Gujarat Region during 28th June-3rd July; Saurashtra & Kutch during 28th June-4th July.
- ❖ Isolated **thunderstorm, lightning & gusty winds (speed reaching 40-50 kmph gusting to 60 kmph)** likely over Konkan & Goa during 28th June-1st July; Madhya Maharashtra during 28th June-3rd July; Marathwada during 28th June-4th July; Gujarat Region on 28th June and during 1st-2nd July.
- ❖ Isolated **heavy rainfall** likely over Konkan & Goa during 28th-30th June; Madhya Maharashtra during 29th June-1st July; Gujarat Region on 28th June and during 2nd-4th July with isolated **very heavy rainfall** also likely over Konkan & Goa on 28<sup>th</sup> June & during 1st-4th July; Madhya Maharashtra during 2nd-4th July.

#### South Peninsular India:

- ❖ **Isolated to Scattered** rainfall likely over Rayalaseema and Tamil Nadu, Puducherry & Karaikal during 28th June-4th July; North Interior Karnataka during 28th-30th June; South Interior Karnataka during 28th-29th June and on 4th July; Coastal Andhra Pradesh & Yanam during 29th June-3rd July.
- ❖ **Fairly Widespread to Widespread** rainfall likely over Coastal Karnataka, Kerala & Mahe, Lakshadweep and Telangana during 28th June-4th July; North Interior Karnataka during 1st-4th July; South Interior Karnataka during 30th June-3rd July; Coastal Andhra Pradesh & Yanam on 28th June and on 4th July.
- ❖ Isolated **thunderstorm, lightning & gusty winds (speed reaching 40-50 kmph gusting to 60 kmph)** likely over Tamil Nadu, Puducherry & Karaikal during 28th-30th June; Coastal Andhra Pradesh & Yanam, Kerala & Mahe and Lakshadweep during 28th June-2nd July; North Interior Karnataka during 28th-29th June; Rayalaseema on 28th June and during 1st-2nd July, **with gusty winds (speed reaching 30-40 kmph gusting to 50 kmph)** likely over Coastal Karnataka and Telangana during 28th June-4th July; North Interior Karnataka during 30th June-4th July; Rayalaseema during 29th-30th June.
- ❖ Isolated **thunderstorm & lightning** likely over South Interior Karnataka during 28th June-4th July.
- ❖ Isolated **heavy rainfall** likely over Coastal Karnataka and Tamil Nadu, Puducherry & Karaikal during 28th-30th June and during 3rd-4th July; Kerala & Mahe during 2nd-4th July; Lakshadweep during 28th-29th June; North Interior Karnataka during 1st-3rd July; South Interior Karnataka on 2nd July; Coastal Andhra Pradesh & Yanam during 28th-29th June and during 1st-4th July; Telangana during 28th June-4th July with isolated **very heavy rainfall** also likely over Kerala & Mahe during 28th June-1st July; Coastal Karnataka during 1st-2nd July; South Interior Karnataka during 30th June-1st July.
- ❖ Strong Surface Winds likely over Coastal Karnataka and South Interior Karnataka during 28th June-4th July; North Interior Karnataka during 30th June-4th July.

### Forecast of maximum/day temperatures:

- ❖ No significant change in maximum temperatures likely over Northwest India till 29<sup>th</sup> June, gradual fall by 4-6°C during 30<sup>th</sup> June-02<sup>nd</sup> July and no significant change thereafter.
- ❖ No significant change in maximum temperatures likely over Maharashtra till 30<sup>th</sup> June and gradual fall by 3-5°C thereafter.
- ❖ No significant change in maximum temperatures likely over Gujarat till 01<sup>st</sup> July and gradual fall by 2-3°C thereafter.
- ❖ No significant change in maximum temperatures likely over the rest parts of country till 04<sup>th</sup> July, 2026.

### Heat Wave, Hot & Humid weather and Warm Night conditions warning:

- ❖ **Heat wave** conditions very likely in isolated pockets over Bihar during 28<sup>th</sup>-29<sup>th</sup> June; East Madhya Pradesh on 28<sup>th</sup> June; Haryana Chandigarh & Delhi during 28<sup>th</sup>-30<sup>th</sup> June; East Uttar Pradesh during 28<sup>th</sup>-29<sup>th</sup> June with **severe heat wave** conditions in isolated pockets on 28<sup>th</sup> June; West Uttar Pradesh during 28<sup>th</sup>-29<sup>th</sup> June with **severe heat wave** conditions in isolated pockets on 28<sup>th</sup> June.
- ❖ **Hot and humid** weather conditions likely to prevail over Odisha on 28<sup>th</sup> June and Saurashtra & Kutch on 28<sup>th</sup> & 29<sup>th</sup> June.

### Fisherman Warning:

Fishermen are advised not to venture into the following areas:

- ❖ **Bay of Bengal:** over westcentral BoB and along & off north Andhra Pradesh coasts during 1<sup>st</sup> to 03<sup>rd</sup> July; over south Sri Lanka coasts adjoining southwest & southeast BoB and Andaman Sea during 28<sup>th</sup> June to 03<sup>rd</sup> July; over Andaman Sea during 30<sup>th</sup> June to 03<sup>rd</sup> July.
- ❖ **Arabian Sea:** along and off Somalia coasts and parts of southwest and westcentral Arabian Sea during 28<sup>th</sup> June to 03<sup>rd</sup> July; Along and off South Oman Coasts and adjoining westcentral Arabian Sea during 30<sup>th</sup> June to 03<sup>rd</sup> July; along & off south Konkan, Goa & Karnataka coast, Lakshadweep area and adjoining eastcentral Arabian Sea on 28<sup>th</sup> June; along & off Konkan & Goa, Karnataka & Kerala coasts, Lakshadweep area and adjoining eastcentral & southeast Arabian Sea during 29<sup>th</sup> June to 03<sup>rd</sup> July; Along & off south Gujarat coast during 01<sup>st</sup> to 2<sup>nd</sup> July; Gulf of Mannar & adjoining Comorin area till 2<sup>nd</sup> July.

### Weather conditions and forecast over Delhi/NCR during 28<sup>th</sup> June -01<sup>st</sup> July, 2026 (Annexure IV)

For more details, kindly refer National Weather Bulletin:

[https://mausam.imd.gov.in/responsive/all\\_india\\_forecast\\_bulletin.php](https://mausam.imd.gov.in/responsive/all_india_forecast_bulletin.php)

For District wise warnings refer: <https://mausam.imd.gov.in/responsive/districtWiseWarningGIS.php>

For Fishermen warning refer <https://rsmcnewdelhi.imd.gov.in/fishermenwarning.php>

### Significant rainfall recorded (in cm) (from 0830 hours IST of yesterday to 0830 hours IST of today):

- ❖ **Meghalaya:** Mawkyrwat 39;
- ❖ **Sub-Himalayan West Bengal:** Indong T.E. 26;
- ❖ **Arunachal Pradesh:** Passighat AWS 15;
- ❖ **West Madhya Pradesh:** Tonkhurd (dist Dewas) 12;
- ❖ **Odisha:** Koraput 10;
- ❖ **Goa:** Mourmugao 9;
- ❖ **Kerala:** Palluruthy (dist Ernakulam) 9;
- ❖ **East Madhya Pradesh:** Lakhnadon (Seoni) 8;
- ❖ **Tamil Nadu:** Thervoy Kandigai Lake (dist Tiruvallur) 8;
- ❖ **East Rajasthan:** Danpur (Banswara) 7;
- ❖ **East Uttar Pradesh:** Tarabganj (Gonda) 7;
- ❖ **Vidarbha:** Yavatmal 7;
- ❖ **Chhattisgarh:** Narayanpur 7;
- ❖ **Mizoram:** Serchip AWS 7.

**Gusty winds (in  $\geq 40$  kmph) (from 0830 hours IST of yesterday to 0830 hours IST of today):**

- ❖ **Gangetic West Bengal:** Burdwan - 63;
- ❖ **West Madhya Pradesh:** Shivpuri - 61; Gwalior - 56; Ashoknagar - 44; Neemuch - 43;
- ❖ **Assam:** KVK Dibrugarh 57;
- ❖ **East Madhya Pradesh:** Jabalpur - 56; Narsinghpur - 41;
- ❖ **Uttarakhand:** Champawat - 54;
- ❖ **East Uttar Pradesh:** Bahraich(AWS) - 50; Lucknow (Ap) - 46; Barabanki(AWS) - 43;
- ❖ **Bihar:** Pusa - 48;
- ❖ **Jharkhand:** Barhi - 44;
- ❖ **Punjab:** Ludhiana - 44;
- ❖ **West Uttar Pradesh:** Bareilly(IAF) - 44; Jalaun(AWS) - 41
- ❖ **Madhya Maharashtra:** Shahada (Nandurbar) - 44; Jalgaon - 41
- ❖ **Saurashtra:** Targhadia(Rjk) 41.

Annexure I

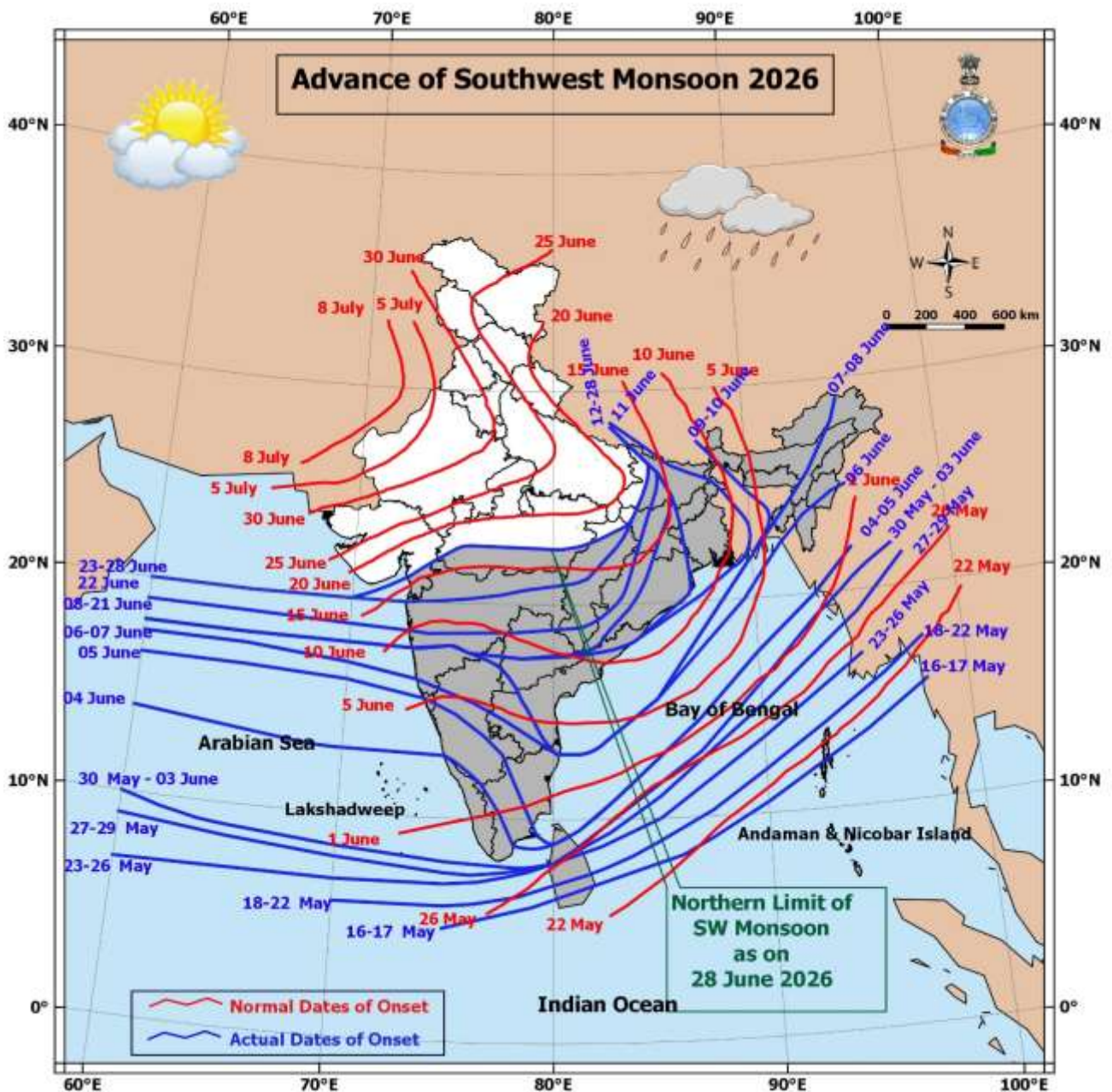
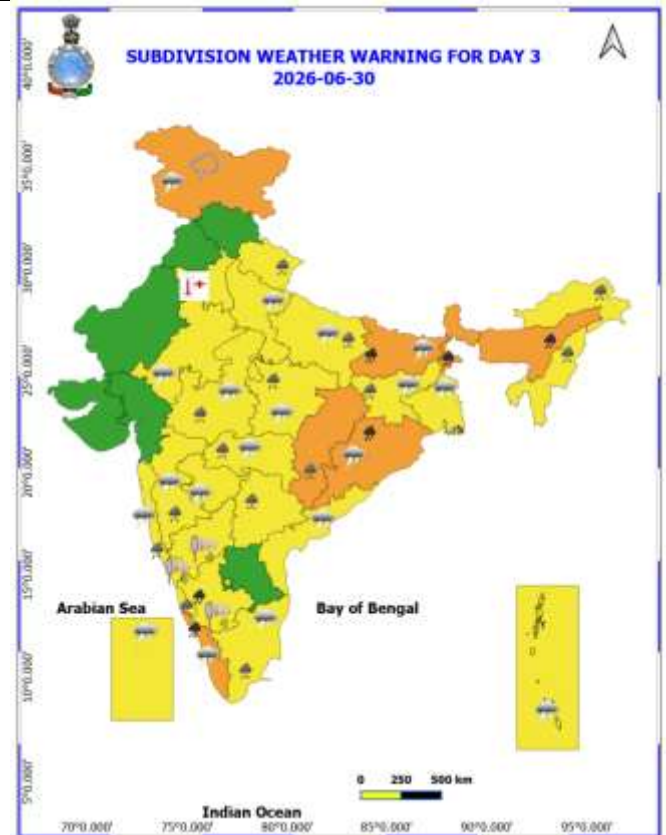
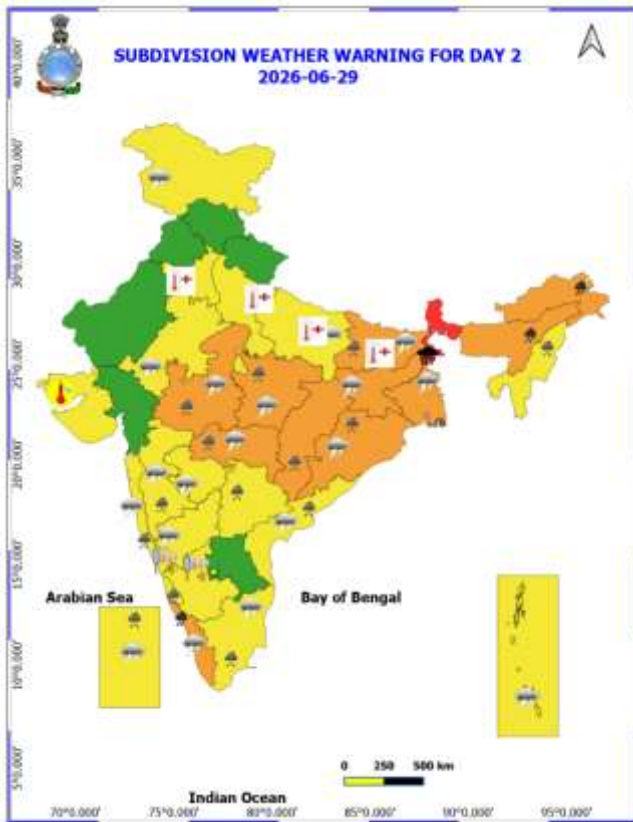
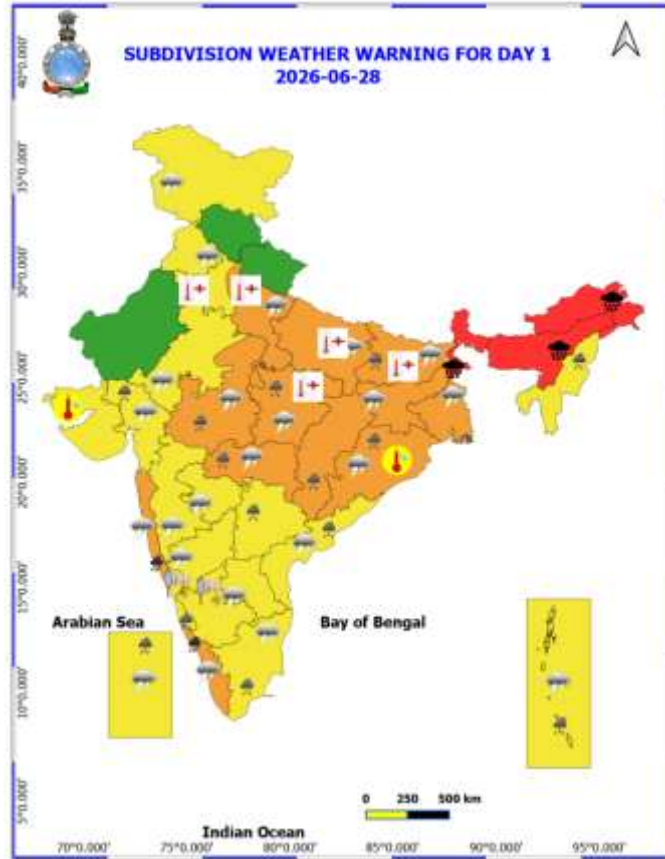
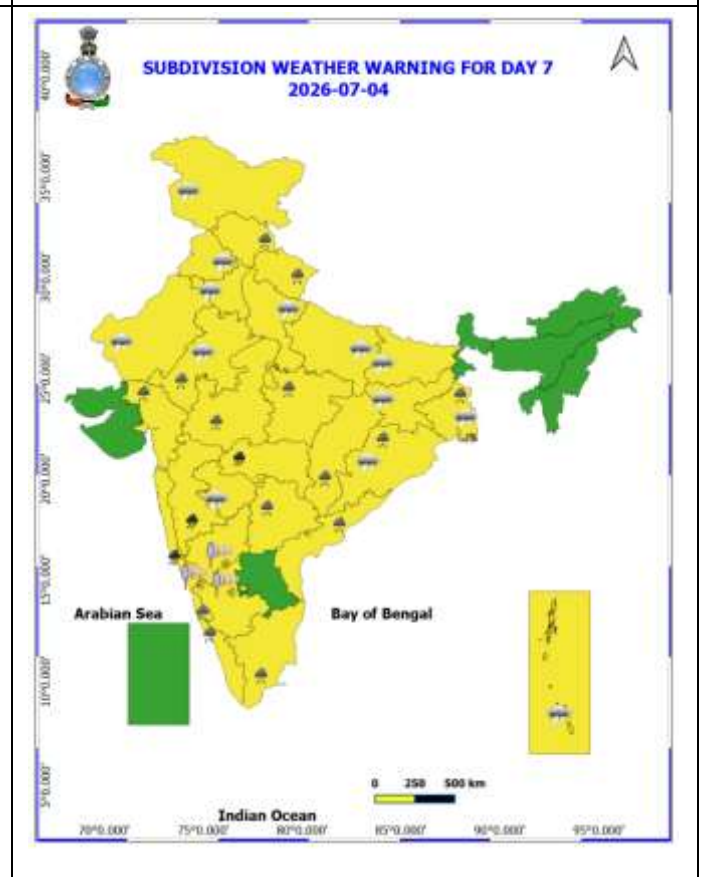
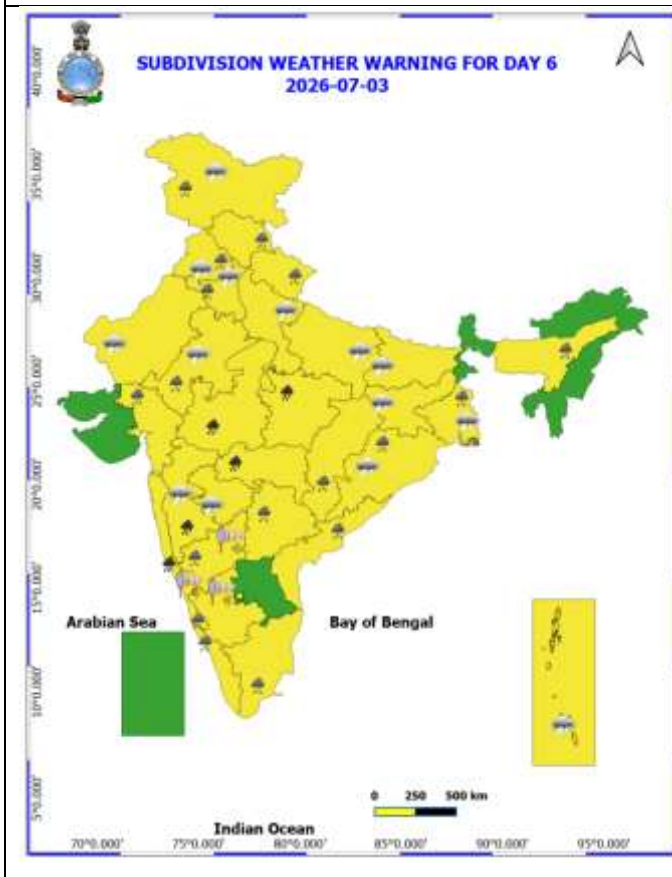
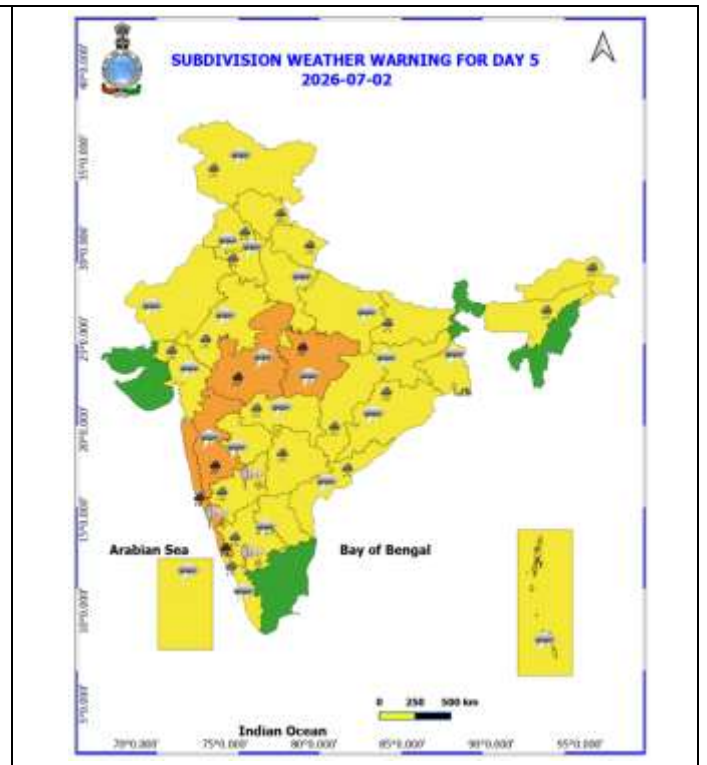
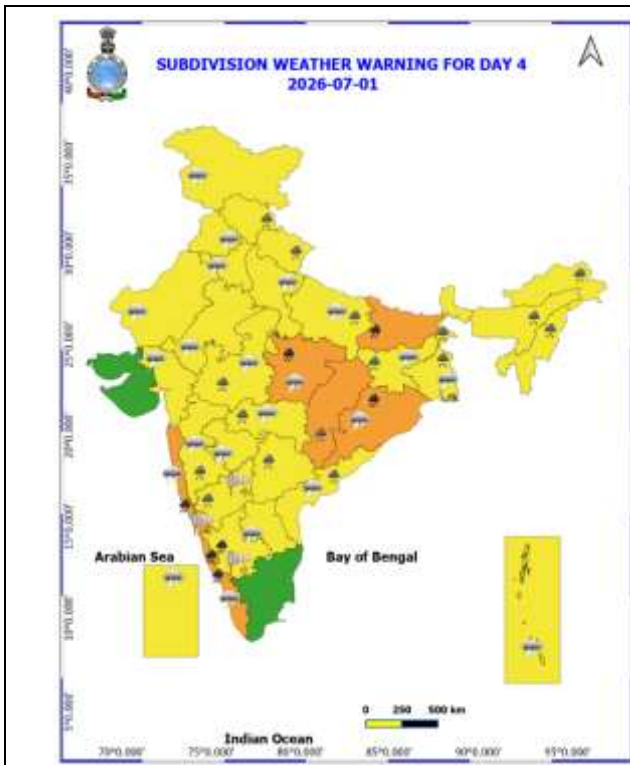


Table-1								
7 Days Rainfall Forecast								
S.No.	Subdivision	28- Jun	29- Jun	30- Jun	1- Jul	2- Jul	3- Jul	4- Jul
		Day 1	Day 2	Day 3	Day 4	Day 5	Day 6	Day 7
1	ANDAMAN & NICOBAR ISLANDS	WS	WS	WS	WS	WS	WS	WS
2	ARUNACHAL PRADESH	WS	WS	WS	FWS	FWS	SCT	SCT
3	ASSAM & MEHGHALAYA	WS	WS	WS	WS	FWS	FWS	FWS
4	NAGALAND, MANIPUR, MIZORAM AND TRIPURA	WS	WS	FWS	FWS	FWS	FWS	FWS
5	SUB HIMALAYAN WEST BENGAL & SIKKIM	WS	WS	WS	WS	FWS	FWS	FWS
6	GANGETIC WEST BENGAL	SCT	SCT	FWS	WS	FWS	WS	WS
7	ODISHA	SCT	FWS	WS	WS	FWS	FWS	FWS
8	JHARKHAND	FWS	FWS	WS	WS	FWS	FWS	FWS
9	BIHAR	SCT	FWS	FWS	FWS	SCT	SCT	ISOL
10	EAST UTTAR PRADESH	ISOL	ISOL	SCT	FWS	FWS	FWS	SCT
11	WEST UTTAR PRADESH	ISOL	ISOL	ISOL	SCT	FWS	SCT	SCT
12	UTTARAKHAND	SCT	FWS	FWS	FWS	WS	WS	FWS
13	HARYANA, CHANDIGARH & DELHI	ISOL	ISOL	DRY	ISOL	SCT	FWS	FWS
14	PUNJAB	ISOL	ISOL	DRY	ISOL	SCT	FWS	FWS
15	HIMACHAL PRADESH	ISOL	ISOL	ISOL	SCT	WS	WS	FWS
16	JAMMU AND KASHMIR AND LADAKH	SCT	SCT	FWS	WS	WS	WS	WS
17	WEST RAJASTHAN	ISOL	ISOL	ISOL	ISOL	ISOL	ISOL	ISOL
18	EAST RAJASTHAN	ISOL	ISOL	ISOL	SCT	SCT	SCT	SCT
19	WEST MADHYA PRADESH	SCT	SCT	SCT	FWS	FWS	FWS	FWS
20	EAST MADHYA PRADESH	SCT	SCT	SCT	FWS	FWS	WS	WS
21	GUJRAT REGION	ISOL	ISOL	ISOL	SCT	SCT	SCT	FWS
22	SAURASHTRA & KUTCH	ISOL	ISOL	ISOL	ISOL	ISOL	ISOL	ISOL
23	KONKAN & GOA	FWS	WS	WS	WS	WS	WS	WS
24	MADHYA MAHARASHTRA	FWS	SCT	SCT	SCT	SCT	FWS	FWS
25	MARATHWADA	WS	SCT	SCT	SCT	SCT	SCT	SCT
26	VIDARBHA	FWS	FWS	FWS	FWS	WS	WS	WS
27	CHHATTISGARH	FWS	FWS	FWS	FWS	WS	WS	WS
28	COASTAL ANDHRA PRADESH	FWS	SCT	SCT	SCT	SCT	SCT	FWS
29	TELANGANA	FWS	FWS	FWS	FWS	FWS	FWS	FWS
30	RAYALASEEMA	SCT	SCT	SCT	SCT	ISOL	ISOL	SCT
31	TAMILNADU & PUDUCHERRY	SCT	SCT	ISOL	ISOL	ISOL	ISOL	ISOL
32	COSTAL KARNATAKA	WS	WS	WS	WS	WS	WS	WS
33	NORTH INTERIOR KARNATAKA	SCT	SCT	SCT	FWS	FWS	FWS	FWS
34	SOUTH INTERIOR KARNATAKA	SCT	SCT	FWS	FWS	FWS	FWS	SCT
35	KERALA AND MAHE	WS	WS	WS	WS	WS	WS	WS
36	LAKSHADWEEP	WS	WS	WS	WS	WS	WS	WS

- As the lead period increases forecast accuracy decrease.





- Action may be taken based on ORANGE AND REDCOLOUR warnings.
- Vulnerable regions likely urban and hilly areas action may be initiated for heavy rainfall warning.
- As the lead period increases forecast accuracy decreases.

Detailed district-wise Multi-Hazard weather warning for next five days available at <https://mausam.imd.gov.in/responsive/districtWiseWarningGIS.php>

## Weather forecast over Delhi/NCR during 28<sup>th</sup> June to 01<sup>st</sup> July 2026

### Past Weather:

There has been no large change in maximum temperatures and rise in minimum temperatures by 1-2°C over Delhi during past 24 hours. The maximum temperatures were found 41-42 °C and the minimum temperatures are in the range 29-31°C respectively during past 24 hours over Delhi. The minimum temperatures are appreciably above normal (3.1°C to 5.0°C) at a few places, above normal (1.6°C to 3.0°C) at a few places and normal (-1.5°C to 1.5°C) over remaining parts of Delhi. The maximum temperatures were appreciably above normal (3.1°C to 5.0°C) at most places and normal (-1.5°C to 1.5°C) over remaining parts of Delhi. Partly cloudy sky with surface wind speed 18 kmph gusting to 30 kmph from the west direction prevailed over Delhi during past 24 hours. Partly cloudy sky with surface wind speeds up to 15 kmph likely to prevailed from the southwest direction over the region in the forenoon today.

### Weather Forecast:

**28.06.2026:** Partly cloudy sky. Heat wave conditions are likely to occur at isolated places over Delhi. A spell of very light to light rain accompanied with thunderstorm/lightning and strong surface winds speed 30-40 kmph gusting to 50 kmph towards afternoon/night at isolated places over Delhi. The maximum temperatures over Delhi are likely to be in the range of 41-43°C. The maximum temperatures will be appreciably above normal (3.1°C to 5.0°C) at most places over Delhi. The predominant surface wind is likely to be from the west direction with surface wind speed reaching up to 20 kmph during the afternoon hours. The wind speed will increase becoming up to 25 kmph from the west direction during evening and night.

**29.06.2026:** Partly cloudy sky. A spell of very light to light rain accompanied with thunderstorm/lightning and strong surface winds speed 30-40 kmph gusting to 50 kmph towards afternoon/night. The maximum and minimum temperatures over Delhi are likely to be in the range of 40°C to 42°C and 29°C to 31°C, respectively. The minimum temperature will be above normal (1.6°C to 3.0°C) at most places and the maximum temperatures will be above normal (1.6°C to 3.0°C) at most places over Delhi. The predominant surface wind is likely to be from west direction with surface wind speed reaching up to 22 kmph during the morning hours. The wind speed will increase becoming up to 25 kmph from the west direction during the afternoon. The wind speed will decrease becoming up to 22 kmph from the west direction during evening and night.

**30.06.2026:** Partly cloudy sky. A spell of very light to light rain accompanied with thunderstorm/lightning and strong surface winds speed 40-50 kmph gusting to 60 kmph towards afternoon/night. The maximum and minimum temperatures over Delhi are likely to be in the range of 38°C to 40°C and 28°C to 30°C, respectively. The minimum temperature will be above normal (1.6°C to 3.0°C) at most places and the maximum temperatures will be above normal (1.6°C to 3.0°C) at most places over Delhi. The predominant surface wind is likely to be from west direction with surface wind speed reaching up to 20 kmph during the morning hours. The wind speed will increase becoming up to 25 kmph from the west direction during the afternoon. The wind speed will decrease becoming up to 20 kmph from the west direction during evening and night.

**01.07.2026:** Generally cloudy sky. A spell of very light to light rain accompanied with thunderstorm/lightning and strong surface winds speed 40-50 kmph gusting to 60 kmph towards afternoon/night. The maximum and minimum temperatures over Delhi are likely to be in the range of 37°C to 39°C and 27°C to 29°C, respectively. The minimum temperature will be near normal (-1.5°C to 1.5°C) at most places, and maximum temperatures will be near normal (-1.5°C to 1.5°C) at most places over Delhi. The predominant surface wind is likely to be from the northwest direction with wind reaching up to 25 kmph during the morning hours. The surface wind speed will decrease becoming up to 20 kmph from the west direction during the afternoon. The wind speed will increase becoming up to 22 kmph from the west direction during evening and night.

### Impact expected and Action Suggested due to thunderstorm with lightning/gusty winds:

Thunderstorms accompanied with lightning and gusty winds (40–50 kmph reaching up to 60 kmph) with dust-raising surface winds are likely to occur.

- **Expected Impacts:** Breaking of tree branches and uprooting of large trees, falling of dead tree limbs, Damage to standing crops, Minor to major damage to power and communication lines due to falling branches, Partial damage to vulnerable structures due to strong winds, Loose objects may get blown away
- **Advisory for Public Safety:** Keep a close watch on weather updates and worsening conditions, stay indoors and avoid unnecessary travel, Close windows and doors securely, take shelter in safe places and avoid open areas, do not take shelter under trees, do not lie on concrete floors or lean against concrete walls during lightning activity, unplug electrical and electronic appliances, immediately move out of water bodies, stay away from objects that conduct electricity

**Citizens are advised to remain alert and follow safety precautions to avoid any loss of life or property.**

## Impact expected and action suggested due to isolated thunderstorm with lightning, gusty/squally winds

- ❖ **Moderate to intense lightning activity likely over Central and East India during next 2-3 days.**
- ❖ Isolated **Hailstorm** activity likely over Jammu-Kashmir-Ladakh-Gilgit-Baltistan-Muzaffarabad on 30th June.

### Impact expected:

- Breaking of tree branches, uprooting of large avenue trees. Large dead limbs blown from trees. Damage to Standing crops.
- Minor to Major damage to banana and papaya trees.
- Minor to major damage to power and communication lines due to breaking of branches.
- Strong wind/hail may damage plantation, horticulture and standing crops.
- Partial damage to vulnerable structures due to strong winds.
- Minor damage to kutcha houses/walls and huts.
- Loose objects may fly.

### Action suggested:

- People are advised to keep a watch on the weather for worsening conditions and be ready to move to safer places accordingly.
- Stay indoors, close windows & doors and avoid travel if possible.
- Take safe shelters; do not take shelter under trees.
- Do not lie on concrete floors and do not lean against concrete walls.
- Unplug electrical/ electronic appliances.
- Immediately get out of water bodies.
- Keep away from all the objects that conduct electricity.

## Impact Expected & Action Suggested due to heavy/very heavy/ Extremely rainfall over

- ❖ **Heavy to very heavy rainfall at many places with extremely heavy rainfall likely at isolated places over Sub-Himalayan West Bengal & Sikkim during 28<sup>th</sup> & 29<sup>th</sup> June; Arunachal Pradesh and Assam & Meghalaya on 28<sup>th</sup> June.**
- ❖ Isolated **very heavy rainfall** also likely over West Madhya Pradesh during 2nd-3rd July; East Madhya Pradesh during 1st-3rd July; Vidarbha during 3rd-4th July; Sub-Himalayan West Bengal & Sikkim on 30th June; Bihar and Odisha during 30th June-1st July; Arunachal Pradesh on 29th June; Assam & Meghalaya during 29th-30th June; Konkan & Goa on 28<sup>th</sup> June & during 1st-4th July; Madhya Maharashtra during 2nd-4th July; Kerala & Mahe during 28th June-1st July; Coastal Karnataka during 1st-2nd July; South Interior Karnataka during 30th June-1st July.

### Impact Expected

- Localized Flooding of roads, water logging in low lying areas and closure of underpasses mainly in urban areas.
- Occasional reduction in visibility due to heavy rainfall.
- Disruption of traffic in major cities due to water logging in roads leading to increased travel time.
- Minor damage to kutcha roads.
- Possibilities of damage to vulnerable structure.
- Localized Landslides/Mudslides/landslips/mudslips/landsinks/mudsinks.
- Damage to horticulture and standing crops in some areas due to inundation.
- It may lead to riverine flooding in some river catchments (for riverine flooding please visit Web page of CWC)

### Action Suggested

- Check for traffic congestion on your route before leaving for your destination.
- Follow any traffic advisories that are issued in this regard.
- Avoid going to areas that face the water logging problems often.
- Avoid staying in vulnerable structure.

## Impact expected and action suggested due to Heat wave/severe heat wave conditions:

- ❖ **Heat wave** conditions very likely in isolated pockets over Bihar during 28th-29th June; East Madhya Pradesh on 28th June; Haryana Chandigarh & Delhi during 28th-30th June; East Uttar Pradesh during 28th-29th June with **severe heat wave** conditions in isolated pockets on 28th June; West Uttar Pradesh during 28th-29th June with **severe heat wave** conditions in isolated pockets on 28th June.

### Alert Areas

- High temperature & increased likelihood of heat illness symptoms in people who are either exposed to sun for a prolonged period or doing heavy work.
- High health concern for vulnerable people e.g. infants, elderly, people with chronic diseases.
- Avoid heat exposure- keep cool. Avoid dehydration.
- Drink sufficient water- even if not thirsty.
- Use ORS, homemade drinks like lassi, torani (rice water), lemon water, buttermilk, etc. to keep yourself hydrated.

### Agromet advisories for likely impact of Heavy Rainfall

- In **Arunachal Pradesh**, ensure proper drainage in vegetables, maize, rice nursery and other crop fields to prevent waterlogging. Harvest mature vegetables and fruits to avoid crop losses.
- In **Assam**, ensure proper drainage arrangements for quick removal of excess water from rice nurseries, jute, ginger, turmeric, vegetables, banana, citrus and papaya. Avoid nursery sowing of *Sali* rice and sowing of jute, maize and vegetables during heavy rainfall. Cover the already seeded area with natural mulching materials like straw, farm residues etc. Provide mechanical support to the sugarcane crop to prevent lodging.
- In **Meghalaya**, ensure proper drainage channels in rice nurseries, maize, ginger, cowpea, vegetable fields and banana plantations. Protect young seedlings from direct exposure to heavy rainfall. Use propping (bamboo or wooden poles) to support heavily laden plants.
- In **Nagaland**, delay transplanting of brinjal in main field. For already transplanted seedlings, maintain proper drainage in and around the fields of maize, vegetables and orchard.
- In **Manipur**, avoid transplanting of rice during heavy rainfall. Ensure proper drainage in soybean, chilli, ginger, turmeric, banana and other crop fields and newly transplanted seedlings and nursery crops to avoid water stagnation.
- In **Mizoram**, create drainage channels surrounding the rice fields and utilize grass mulch to cover the seeds. Provide support to fruit-bearing or partially lodge plants/trees. Propping should be done to prevent maize plants from lodging.
- In **Tripura**, ensure adequate drainage arrangements to remove excess water from rice and vegetable fields during heavy rainfall.
- In **Sub Himalayan West Bengal and Sikkim** avoid nursery sowing of rice during heavy rainfall; protect already sown rice nursery beds with straw mulch, dry grass, or temporary polythene / agro-net covers to prevent seed washing, poor germination and seedling loss. Drain out excess water from jute, ginger, chilli, tomato and dalley khorsani fields and nurseries of *kharif* rice, finger millet and vegetables.
- In **Konkan and ghat areas of Madhya Maharashtra**, make arrangement to drain out excess water from nurseries of rice, finger millet and vegetables.
- In **Keralam**, drain out excess water from banana, coconut, cardamom, ginger, black pepper and vegetables. Provide staking support in banana plants and strengthen the pandals of vegetable crops. Avoid transplanting of rice during heavy rain.
- In **Tamil Nadu**, undertake harvesting of matured pearl millet and picking of cotton during clear weather and store the harvested produce at safer places.
- In **Coastal Karnataka**, ensure proper drainage in rice seedbeds and fruit orchards to prevent water stagnation.
- In **Lakshadweep**, provide adequate drainage in standing crop fields to prevent waterlogging.
- 
- In **Coastal Andhra Pradesh**, maintain adequate drainage in rice nursery, maize fields and horticultural crops (mango, banana etc.) to avoid water stagnation.
- In the regions expecting heavy rainfall, including **Vidarbha, East Madhya Pradesh, Chhattisgarh, Gujarat, Odisha, Andaman & Nicobar and Bihar** withhold irrigation in standing crops, make necessary arrangements to remove excess rainwater from the crop fields.

### Agromet advisories for likely impact of High temperatures / Heat Waves

- In Bihar and Uttar Pradesh, East Madhya Pradesh and Haryana apply light irrigation as per requirement in vegetable crops and fruit orchards. Carry out mulching with crop residue, straw or polythene to conserve soil moisture. Use temporary shade nets to protect the fruit plants from high temperatures.

### Agromet advisories for likely impact of Thunderstorm / Gusty Winds

- Shift the harvested produce in safer places or cover the produce with tarpaulin sheets in the fields. Tie the harvested crops securely and cover them to minimize the risk of displacement from strong surface winds.
- Provide mechanical support to horticultural crops and staking or support to vegetables and young fruit plants / fruit-bearing plants to avoid lodging due to strong winds.

### Livestock / Poultry / Fisheries

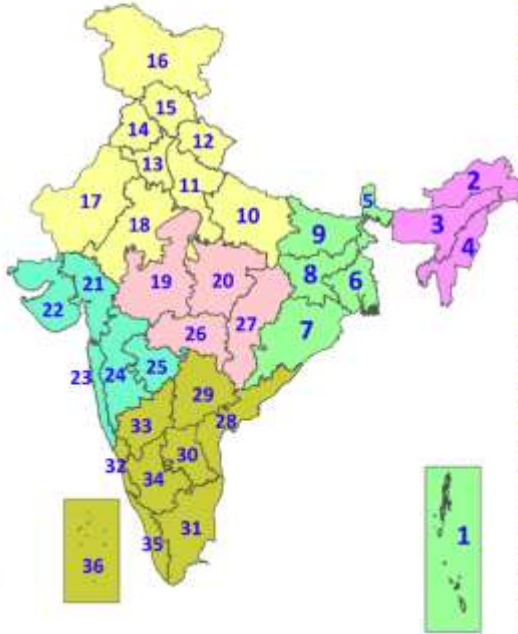
- Keep the animals inside the shed during heavy rainfall and provide them balanced feed.
- Store the feed and fodder in a safe place to prevent spoilage.
- In regions with high temperatures and heat wave conditions, provide clean, cool drinking water to animals, and cover the roofs of poultry sheds with grass to reduce the adverse effects of heat.
- Construct an outlet with proper netting around the ponds to drain excess water, thereby preventing fish from escaping in the event of overflow.

### Legends & abbreviations:

- ❖ **Heavy Rain:**64.5-115.5mm; **Very Heavy Rain:**115.6-204.4mm; **Extremely Heavy Rain:** >204.4mm.
- ❖ **Obsy:** Observatory; **Automatic Weather Station;** **ARG:** Automatic Rain Gauge; **dist:** District; **NH:** National Highway; **KVK:** Krishi Vigyan Kendra; **DVC:** Damodar Valley Corporation; **PTO:** Part Time Office, **Aero:** Aerodrome, **IAF:** Indian Air Force.
- ❖ **Region wise classification of meteorological Sub-Divisions:**
  - **Northwest India:** Western Himalayan Region (Jammu-Kashmir-Ladakh-Gilgit-Baltistan-Muzaffarabad, Himachal Pradesh and Uttarakhand); Punjab, Haryana Chandigarh & Delhi; West Uttar Pradesh, East Uttar Pradesh, West Rajasthan and East Rajasthan.
  - **Central India:** West Madhya Pradesh, East Madhya Pradesh, Vidarbha and Chhattisgarh.
  - **East India:** Bihar, Jharkhand, Sub-Himalayan West Bengal & Sikkim; Gangetic West Bengal, Odisha and Andaman & Nicobar Islands.
  - **Northeast India:** Arunachal Pradesh, Assam & Meghalaya and Nagaland, Manipur, Mizoram & Tripura.
  - **West India:** Gujarat Region, Saurashtra & Kutch, Coastal Maharashtra (Konkan) & Goa, Madhya Maharashtra and Marathawada.
  - **South India:** Coastal Andhra Pradesh & Yanam, Telangana, Rayalaseema, Coastal Karnataka, North Interior Karnataka, South Interior Karnataka, Kerala & Mahe, Tamil Nadu, Puducherry & Karaikal and Lakshadweep.

## LEGENDS

1. अंडमान और निकोबार द्वीपसमूह
2. अरुणाचल प्रदेश
3. असम और मेघालय
4. नागालैंड, मणिपुर, मिजोरम और त्रिपुरा
5. उप-हिमालयी पश्चिम बंगाल और सिक्किम
6. गंगीय पश्चिम बंगाल
7. ओडिशा
8. झारखंड
9. बिहार
10. पूर्वी उत्तर प्रदेश
11. पश्चिम उत्तर प्रदेश
12. उत्तराखंड
13. हरियाणा, चंडीगढ़ और दिल्ली
14. पंजाब
15. हिमाचल प्रदेश
16. जम्मू और कश्मीर और लद्दाख
17. पश्चिम राजस्थान
18. पूर्वी राजस्थान
19. पश्चिम मध्य प्रदेश
20. पूर्वी मध्य प्रदेश
21. गुजरात
22. सौराष्ट्र
23. कोंकण और गोवा
24. मध्य महाराष्ट्र
25. मराठवाड़ा
26. विदर्भ
27. छत्तीसगढ़
28. तटीय आंध्र प्रदेश और यनम
29. तेलंगाना
30. रायलसीमा
31. तमिलनाडु, पुडुचेरी और कराईकल
32. तटीय कर्नाटक
33. आंतरिक उत्तरी कर्नाटक
34. आंतरिक दक्षिणी कर्नाटक
35. केरल और माहे
36. लक्षद्वीप



1. Andaman & Nicobar Islands
2. Arunachal Pradesh
3. Assam & Meghalaya
4. Nagaland, Manipur, Mizoram & Tripura
5. Sub-Himalayan West Bengal & Sikkim
6. Gangetic West Bengal
7. Odisha
8. Jharkhand
9. Bihar
10. East Uttar Pradesh
11. West Uttar Pradesh
12. Uttarakhand
13. Haryana, Chandigarh & Delhi
14. Punjab
15. Himachal Pradesh
16. Jammu & Kashmir and Ladakh
17. West Rajasthan
18. East Rajasthan
19. West Madhya Pradesh
20. East Madhya Pradesh
21. Gujarat
22. Saurashtra
23. Konkan & Goa
24. Madhya Maharashtra
25. Marathwada
26. Vidarbha
27. Chhattisgarh
28. Coastal Andhra Pradesh & Yanam
29. Telangana
30. Rayalaseema
31. Tamilnadu, Puducherry & Karaikal
32. Coastal Karnataka
33. North Interior Karnataka
34. South Interior Karnataka
35. Kerala & Mahe
36. Lakshadweep

### SPATIAL DISTRIBUTION (% of Stations reporting)

% Stations	Category	% Stations	Category
76-100	Widespread (WS/Most Places)	26-50	Scattered (SCT/A Few Places)
51-75	Fairly Widespread (FWS/Many Places)	1-25	Isolated (ISOL)

- |                      |                      |              |
|----------------------|----------------------|--------------|
| Fog                  | Heavy Snow           | Cold Wave    |
| Heavy Rain           | Dust Storm           | Cold Day     |
| Very Heavy Rain      | Heat Wave            | Ground Frost |
| Extremely Heavy Rain | Warm Night           |              |
| Thunder & Lightning  | Hot Day              |              |
| Hailstorm            | Hot & Humid          |              |
| Dust Raising Winds   | Strong Surface Winds |              |

#### COLOUR CODED WARNING

- No Warning (No Action)
- Watch (Be Aware)
- Alert (Be Prepared To Take Action)
- Warning (Take Action)

#### Probabilistic Forecast

Terms	Probability of Occurrence (%)
Unlikely	< 25
Likely	25 - 50
Very Likely	50 - 75
Most Likely	> 75

\* Red colour warning does not mean "Red Alert". Red colour warning means "Take Action".  
Forecast and Warning for any day is valid from 0830 hours IST of day till 0830 hours IST of next day.  
For more details, kindly visit <https://mausam.imd.gov.in> or contact: 011-2434-4599  
(Service to the Nation since 1875)

### DEFINITION/CRITERIA

<b>Rain/ Snow *</b>	<p><b>Heavy:</b> 64.5 to 115.5 mm/cm *</p> <p><b>Very Heavy:</b> 115.6 to 204.4 mm/cm*</p> <p><b>Extremely Heavy:</b> &gt; 204.4 mm/cm *</p>
<b>Heat Wave</b>	<p>When maximum temperature of a station reaches <math>\geq 40^{\circ}\text{C}</math> for plains and <math>\geq 30^{\circ}\text{C}</math> for hilly regions</p> <p><b>(a) Based on Departure from normal</b></p> <p><b>Heat Wave:</b> Maximum Temperature Departure from normal <math>4.5^{\circ}\text{C}</math> to <math>6.4^{\circ}\text{C}</math>.</p> <p><b>Severe Heat Wave:</b> Maximum Temperature Departure from normal <math>\geq 6.5^{\circ}\text{C}</math></p> <p><b>(b). Based on Actual maximum temperature</b></p> <p><b>Heat Wave:</b> When actual maximum temperature <math>\geq 45^{\circ}\text{C}</math>.</p> <p><b>Severe Heat Wave:</b> When actual maximum temperature <math>\geq 47^{\circ}\text{C}</math></p> <p><b>( c). Criteria for heat wave for coastal stations</b></p> <p>When maximum temperature departure is <math>&gt;4.5^{\circ}\text{C}</math> from normal. Heat Wave may be described provided maximum temperature <math>\geq 37^{\circ}\text{C}</math></p>
<b>Warm Night</b>	<p><b>When maximum temperature remains <math>40^{\circ}\text{C}</math></b></p> <p><b>Warm Night:</b> When minimum temperature departure <math>4.5^{\circ}\text{C}</math> to <math>6.4^{\circ}\text{C}</math>.</p> <p><b>Severe Warm Night:</b> When minimum temperature departure <math>&gt;6.4^{\circ}\text{C}</math>.</p>
<b>Cold Wave</b>	<p>When minimum temperature of a station <math>\leq 10^{\circ}\text{C}</math> for plains and <math>\leq 0^{\circ}\text{C}</math> for hilly regions.</p> <p><b>(a). Based on departure</b></p> <p><b>Cold Wave:</b> Minimum Temperature Departure from normal <math>-4.5^{\circ}\text{C}</math> to <math>-6.4^{\circ}\text{C}</math>.</p> <p><b>Severe Cold Wave:</b> Minimum Temperature Departure from normal <math>\leq -6.5^{\circ}\text{C}</math></p> <p><b>(b) Based on actual Minimum Temperature (for Plains only)</b></p> <p><b>Cold Wave :</b> When Minimum Temperature is <math>\leq 4.0^{\circ}\text{C}</math></p> <p><b>Severe Cold Wave:</b> When Minimum Temperature is <math>\leq 2.0^{\circ}\text{C}</math></p> <p><b>( c) For Coastal Stations</b></p> <p>When Minimum Temperature departure is <math>\leq -4.5^{\circ}\text{C}</math> &amp; actual Minimum Temperature is <math>\leq 15^{\circ}\text{C}</math></p>
<b>Cold Day</b>	<p>When minimum temperature of a station <math>&lt; 10^{\circ}\text{C}</math> for plains and <math>\leq 0^{\circ}\text{C}</math> for hilly regions</p> <p><b>Based on departure</b></p> <p><b>Cold Day:</b> Maximum Temperature Departure from normal <math>-4.5^{\circ}\text{C}</math> to <math>-6.4^{\circ}\text{C}</math>.</p> <p><b>Severe Cold Day:</b> Maximum Temperature Departure from normal <math>\leq -6.5^{\circ}\text{C}</math></p>
<b>Fog</b>	<p><b>Phenomenon of small droplets suspended in air and the horizontal visibility <math>&lt; 1\text{km}</math></b></p> <p><b>Moderate Fog:</b> When the visibility between 500-200 metres</p> <p><b>Dense Fog:</b> when the visibility between 50- 200 metres</p> <p><b>Very Dense Fog:</b> when the visibility <math>&lt; 50</math> metres</p>
<b>Thunderstorm</b>	<p>Sudden electrical discharges manifested by a flash of light (Lightning) and a sharp rumbling sound (thunder)</p>
<b>Dust/Sand Storm</b>	<p>An ensemble of particles of dust or sand energetically lifted to great heights by a strong and turbulent wind.</p>
<b>Frost</b>	<p><b>Ice deposits on ground</b></p> <p>Air temperature <math>\leq 4^{\circ}\text{C}</math> ( over Plains)</p>
<b>Squall</b>	<p><b>A strong wind that rises suddenly, lasts for atleast 1 minute.</b></p> <p><b>Moderate:</b> Wind speed 52-61 kmph</p> <p><b>Severe:</b> Wind speed 62-67 kmph</p> <p><b>Very Severe:</b> Wind speed <math>&gt;67</math> kmph</p>
<b>Sea State</b>	<p><b>Effect of various waves in the sea over specific area</b></p> <p><b>Rough to very rough:</b> Wind speed 41-62 kmph (22-33 knots) &amp; Wave height 2.5-6 metre</p> <p><b>High to very high:</b> Wind speed 63-117 kmph ( 34-63 knots) &amp; Wave height 6-14 metre</p> <p><b>Phenomenal:</b> Wind speed <math>&gt;117</math> kmph (<math>&gt;63</math> knots) &amp; Wave height <math>&gt;14</math> metre</p>
<b>Cyclone</b>	<p><b>Cyclonic Storm:</b> Wind speed 62-87 kmph (34-47 knots)</p> <p><b>Severe Cyclonic Storm:</b> Wind speed 88-117 kmph (48-63 knots)</p> <p><b>Very Severe Cyclonic Storm:</b> Wind speed 118-165 kmph (64 - 89 knots)</p> <p><b>Extremely Severe Cyclonic Storm:</b> Wind speed 166-220 kmph (90 -119 knots)</p> <p><b>Super Cyclone Storm:</b> Wind speed <math>&gt;220</math> kmph (<math>&gt;119</math> knots)</p>

\* Red colour warning does not mean "Red Alert", Red colour warning means "Take Action".  
Forecast and Warning for any day is valid from 0830 hours IST of day till 0830 hours IST of next day.  
For more details, kindly visit <https://mausam.imd.gov.in> or contact: 011-2434-4599  
(Service to the Nation since 1875)